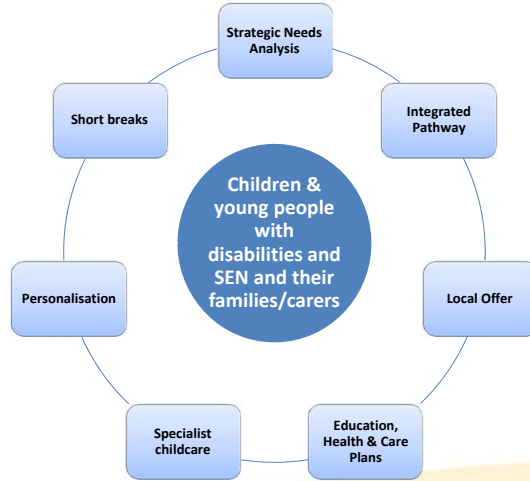


**Delivering the strategic approach for
children and young people
with disabilities or
special educational needs**

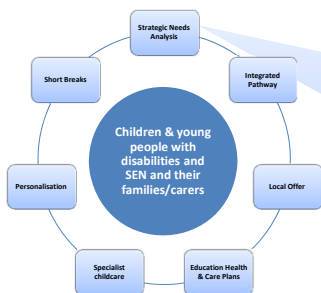
**Children & Young People
with Disabilities or Special Educational Needs
Services Transformation Programme:**

*Our vision for children and young people with
disabilities and/or special education needs is the same
as for all of Herefordshire's children and young people
– that they are healthy, safe and achieve well; and
that they go on to lead happy and fulfilled lives with
choice and control.*

CWD & SEN Services Transformation Programme Key Deliverables



CWD & SEN Services Transformation Programme Key Deliverables



Strategic Needs Analysis

Build-on the 2010 CWD review & 2014 Children's Integrated Needs Analysis to further understand the:

- needs & demands of CWD or SEN
- impact of local services on outcomes
- alternative evidence based models



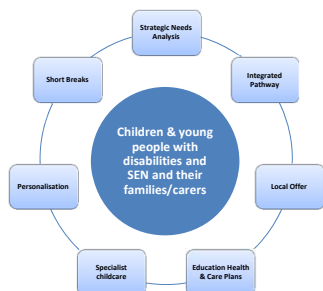
CWD & SEN Services Transformation Programme Key Deliverables



Integrated Pathway
Children and families experience an integrated multiagency pathway to access the support that they need.
The pathway will cover different stages of life, including transition to adulthood.



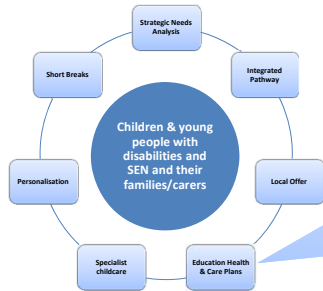
CWD & SEN Services Transformation Programme Key Deliverables



The Local Offer
Easy to understand information, advice and guidance about the support available to families in Herefordshire, and how it can be accessed
<https://www.herefordshire.gov.uk/education-and-learning/local-offer>



CWD & SEN Services Transformation Programme Key Deliverables

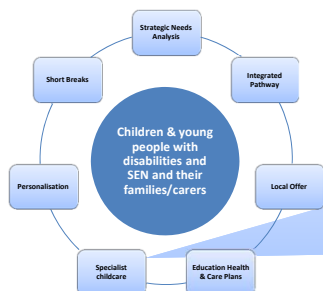


Education, Health & Care Plans

Frontline services work effectively together with children and families to agree a coordinated plan and package of support that will meet their needs



CWD & SEN Services Transformation Programme Key Deliverables



Specialist Childcare

Ensure Herefordshire's childcare sufficiency strategy adequately addresses the needs and demand for specialist CWD or SEN childcare places



CWD & SEN Services Transformation Programme Key Deliverables

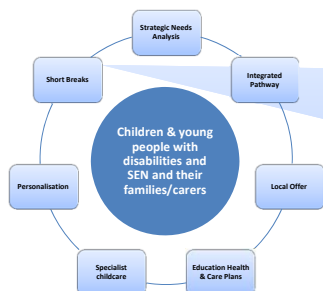


Personalisation

Delivery of a personal budgets allocation, management and review system that will enable families to have more choice and control of the services they access



CWD & SEN Services Transformation Programme Key Deliverables



Short Breaks

Review Phase 1 and complete Phase 2 of the short-breaks re-commissioning process.

Discussion: We need YOUR help to develop the local provider market



CWD & SEN Services Transformation Programme Key Deliverables

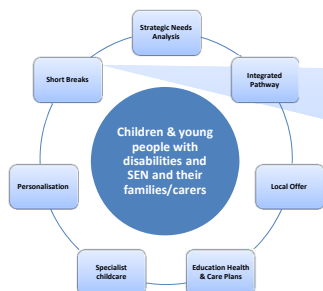


Short Breaks: Local Challenges

- Changing culture from relying on high-cost and institutionalised services
- Promoting self-reliance, independence and choice
- Support to access inclusive universal and mainstream activities
- Evolving the wider provider market to support children with disabilities and challenging behaviours



CWD & SEN Services Transformation Programme Key Deliverables



Short Breaks: Addressing unmet need

- Consider the pen-picture provided, what types of break could help?
- What universal or specialist activity breaks have been successful in places like Herefordshire?
- What adult or community services could be developed to work with children?
- What would encourage existing or new providers into the short breaks market?

